

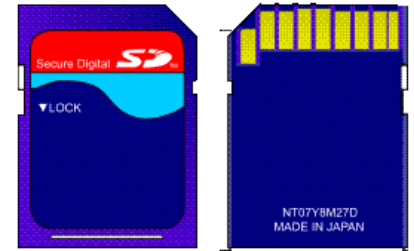


AF-3400/3500 Map Evaluation Instructions

If you install the AFS Map Evaluation key and the map database files on a SD memory card you will be able to use the moving map feature on the EFIS for the next five hours of Hobbs time.

1. Obtain a SD Card

The AF-3400/3500 has a standard size **Secure Digital (SD)** memory card slot in the upper left hand corner. You should use a SD memory card that is 128 Megabytes to 2 Gigabytes in size. Most local computer or electronics stores will have them.



2. Format SD Card

Format the SD card on your PC for "FAT32". Right click your SD drive icon and click on format. You should also make sure it is set for FAT32.

3. Download current Map database files

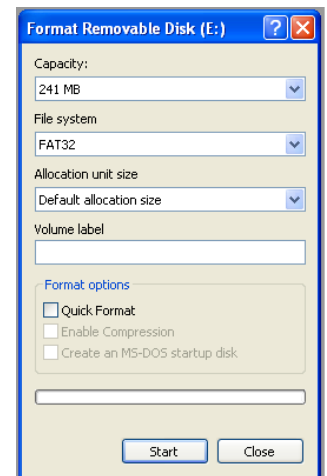
Go to our website under the Support header -> Current Map Data.

<http://www.advanced-flight-Systems.com/Support/MapData/mapdata.html>

Right click each file and select **Save Target As** select your SD card drive as the target location and click **Save** to transfer each file to the SD card. Once you are finished you should have the following files on your SD card:

AFSMAPUS.AFM	Airport and Airspace data
AFSTERUS.AFM	Terrain data for the USA
AFSVECUS.AFM	Roads, Rivers, Lakes and Cities
MAP_EVAL	Map Evaluation key file

Make sure that you remove any file extension name from the MAP_EVAL file.

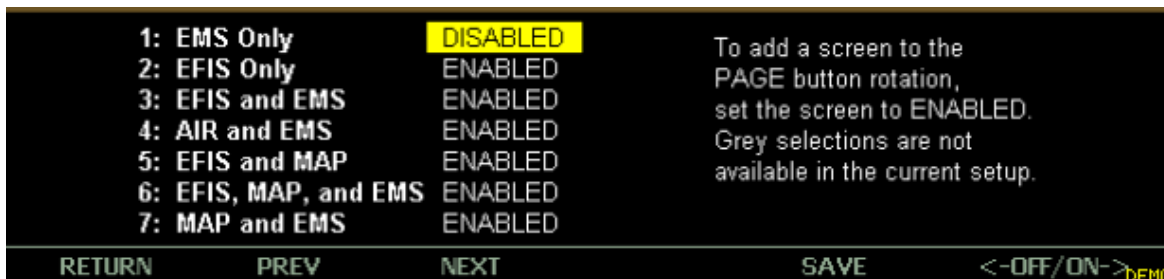


4. Install SD Card into EFIS

Turn the EFIS on with the SD Card inserted. Your unit will display the mapping features for 5 TACH or AIRSPEED hours. The SD card with the map database must remain in the EFIS for the map to work. Your remaining evaluation time is displayed above the Warning Paragraph at boot up.

5. Verify Map pages are turned ON

From the EFIS main menu select **[EFIS] -> [Settings] -> [More] -> <Page List>** knob button. Turn the knob to enable or disable each item. After selecting the desired pages be sure and press the **[SAVE]** button.



Anytime during or after the evaluation period you can purchase a permanent map license by calling Advanced Flight Systems (503) 263-0037 or emailing support@Advanced-Flight-Systems.com.