

AF-4500s/3500s/3400s Software Installation Procedure

OVERVIEW:

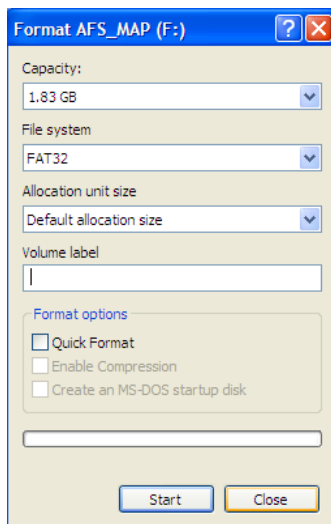
To install the latest version of software for AF-4500s/3500s/3400s systems you will need to go to the AF3400s/AF3500s/AF4500s section of the Advanced Flight Systems website. You will need the SD card(s) that shipped with each system (Map Card) plus another 1-2GB SD card for the software installation (Install Card). Both cards will need formatting. You will then need to setup the Install Card and update all of the Map cards. Finally, you will need to install the software on each display and then reinsert the map cards. Below are the directions for each of these steps.

DOWNLOAD:

Go to the Advanced Flight website for the latest version of the AF-3000s/AF-4000s software. You will need to download the MAP Version 12 and the software update onto your computer. Here is a link to the [AF3400s/AF3500s/AF4500s Page](#).

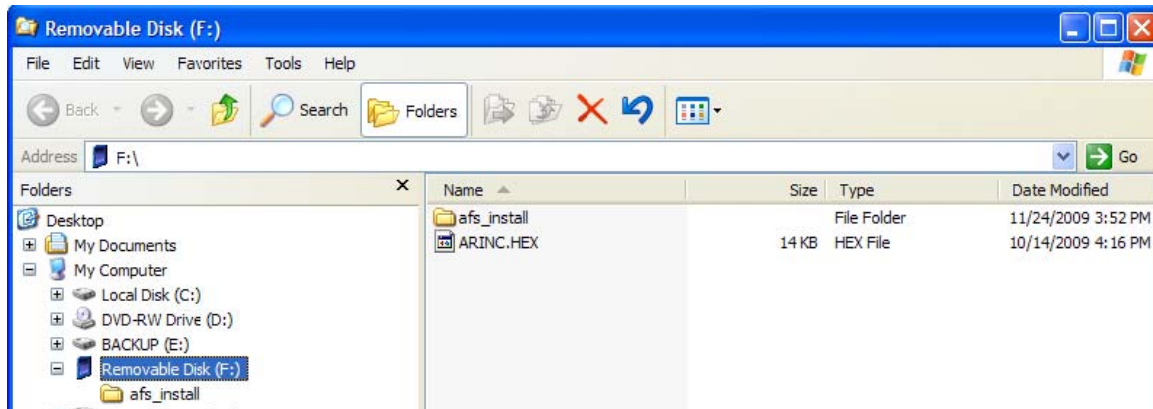
SD CARD FORMATTING:

Format the card with file format FAT32. Do not use QUICK FORMAT option.



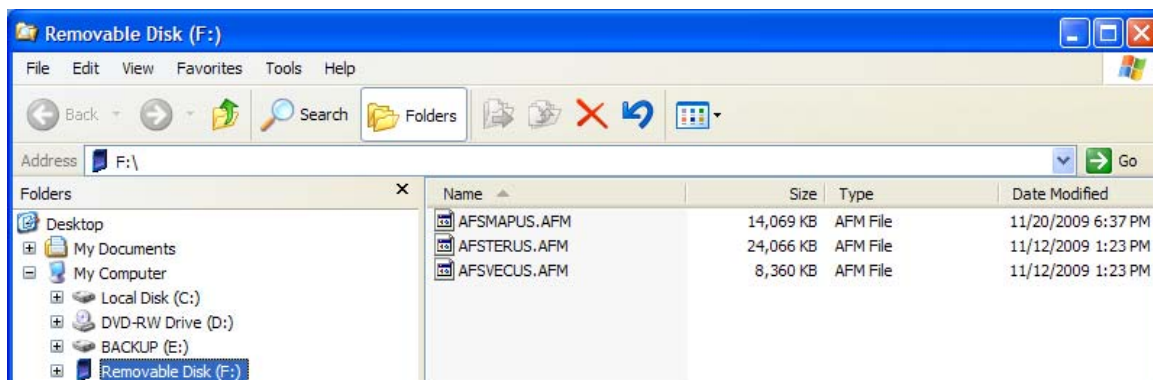
INSTALL CARD SETUP:

Download the System Software to your computer. (Ex AF4000V70602-MV12-AV40_FULL_INSTALL.zip)
Extract the zip file onto the card. Verify the following files/directories are on the card after extraction:



MAP CARD SETUP:

Extract the AFSMAPV12_1004.zip file onto the card. Verify the following three files on the card:



SOFTWARE INSTALLATION:

With the power off, insert the Install Card and power the screen up on ships power. Wait until the 'I Agree' screen is visible and verify the Software Version matches the version listed on the web site (ex 7.6.2-MV12). Then power down the screen and replace the Install Card with the Map Card. If the aircraft is equipped with more than one screen repeat this process on each screen until all have been upgraded.

ARINC SOFTWARE INSTALLATION (Optional, ARINC Adapter required):

If you have an ARINC adapter check the software version using [CHECK] -> [MAINT] -> [ABOUT] selection. Verify that your ARINC adaptor is running version 4.0 software, if it is already running version 4.0 you can skip the following steps.

Enter the EFIS calibration menu using the new shortcut: [CHECK] -> [MAINT] -> [ADMIN] -> then hold [CALIBRATION] button for 2 seconds.

Cycle power to the ARINC adaptor using the aircraft Master Switch. If the ARINC module is powered on the same source as the EFIS the internal EFIS battery should keep the EFIS running during the power cycle.

Select the following menu:

Admin Settings
System Maintenance
Upgrade ARINC Software

Press the start button to begin loading the new code. The screen will say, "Loading....xxx". Where xxx is the number of bytes transferred.

When the screen prints "Done.", you can remove the card and reboot the EFIS and ARINC Module by cycling the power to both units.

If you incur any problems with the installation please contact support for assistance.